



Product Catalog
2023



GenTek™

Genuine Restorative Components

Tapered Screw-Vent®, Trabecular Metal®,
Eztetic®, TSX™, and Tapered Abutment





GenTek Open Connectivity

For even more flexibility.

Genuine

GenTek Pre-Abutment Blanks are compatible with Medentika® holders (CAM update required).



NEW

GenTek TiBases

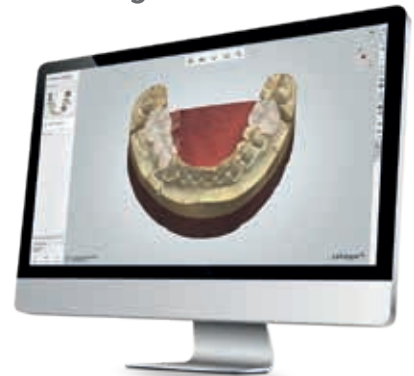
Achieve efficiency to your CAD/CAM restoration workflow with a singular TiBase that provides flexibility of channel angulation and adjustable post height options.

exocad

RealGUIDE™
UNIVERSAL OPEN SYSTEM

dental wings

3shape



Free

Libraries for the GenTek restorative components are available for Zfx CAD, RealGUIDE™, 3Shape, exocad, and Dental Wings CAD software.

Free download at zfx-dental.com



SCAN & INFORM
More at
www.zfx-dental.com

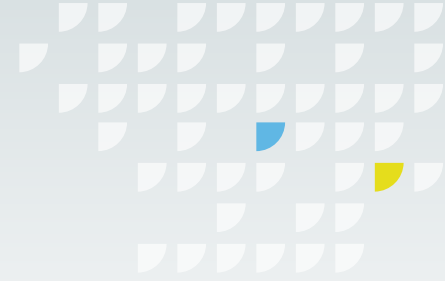






Table of Contents

NEW: GenTek TiBases	4
GenTek Pre-Abutment Blanks	8
GenTek TiBases – Milling Block Compatible	10
GenTek TiBases – ZimVie Multi-Unit Abutment Compatible	14
GenTek Scanbodies	16
GenTek Digital Scan Analogs	19

Legend

∅ Restorative Platform (mm)
Color code for Eztetic, TSX,
and Tapered Screw-Vent

	2.9 mmD
	3.5 mmD
	4.5 mmD
	5.7 mmD

Placement Tool for GenTek Digital Scan Analogs Compatibility Guide

Placement Tool	Laboratory Analog
M 16	Eztetic Lab Analogss
M 18	TSV and Tapered Abutment Lab Analogs



GenTek Calibration Tool for Milling Machines

Description	Part No.
GenTek Calibration Abutment Blank	ZFX18-CALIB



GenTek Pre-Abutment Blank Holder

Description	Part No.
Zfx Pre-Abutment Blank Holder, Standard	ZFX02PMSH
Zfx Pre-Abutment Blank Holder, Multi-Blank for Zfx Inhouse5x	ZFX02002069
Zfx Pre-Abutment Blank Adaptor for Glass Ceramic Holder	ZFX02PMA

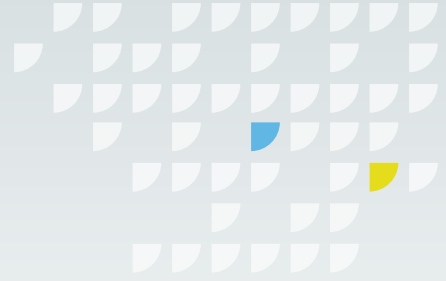


Milling Block Compatibility Guide¹

ZimVie Dental Restorative Platform Connection	Block Interface Size
Tapered Screw-Vent and Trabecular Metal	L
Eztetic	S



¹ Not applicable for the GenTek Angulated Screw Channel TiBase



NEW: GenTek TiBases

ZimVie Dental Eztetic and TSX Restorative Platform Connections

TiBase Engaging

incl. Hexalobular Retaining Screw and Gluing Screw



Post Height ¹ (mm)	Restorative Platform (mm)	Collar Height (mm)	Part No.
7	2.9	1.0	ZFX11ZB-EZ29AS10E
		1.7	ZFX11ZB-EZ29AS17E
		2.6	ZFX11ZB-EZ29AS26E

Hexalobular Retaining Screw



Part No.	
ZFX09-ZB-EZ-HLRS	30 Ncm

TiBase Non-Engaging

incl. Hexalobular Retaining Screw and Gluing Screw



Post Height ¹ (mm)	Restorative Platform (mm)	Collar Height (mm)	Part No.
7	2.9	1.0	ZFX11ZB-EZ29AS10N
		1.7	ZFX11ZB-EZ29AS17N

Hexalobular Retaining Screw



Part No.	
ZFX09-ZB-EZ-HLRS	30 Ncm

ZimVie Dental TSX, Tapered Screw-Vent, & Trabecular Metal Restorative Platform Connections

TiBase Engaging

incl. Hexalobular Retaining Screw and Gluing Screw



Post Height ¹ (mm)	Restorative Platform (mm)	Collar Height (mm)	Part No.	
7	3.5	0.3	ZFX11ZB-TSV35AS03E	
		1.3	ZFX11ZB-TSV35AS13E	
		2.6	ZFX11ZB-TSV35AS26E	
	4.5	4.5	0.3	ZFX11ZB-TSV45AS03E
			1.3	ZFX11ZB-TSV45AS13E
			2.6	ZFX11ZB-TSV45AS26E
	5.7 ²	5.7 ²	0.3	ZFX11ZB-TSV57AS03E
			1.3	ZFX11ZB-TSV57AS13E
			2.6	ZFX11ZB-TSV57AS26E

Hexalobular Retaining Screw



Part No.	
ZFX09-ZB-TSV-HLRS	30 Ncm

TiBase Non-Engaging

incl. Hexalobular Retaining Screw and Gluing Screw



Post Height ¹ (mm)	Restorative Platform (mm)	Collar Height (mm)	Part No.
7	3.5	0.3	ZFX11ZB-TSV35AS03N
		1.3	ZFX11ZB-TSV35AS13N
	4.5	0.3	ZFX11ZB-TSV45AS03N
		1.3	ZFX11ZB-TSV45AS13N
	5.7 ²	0.3	ZFX11ZB-TSV57AS03N
		1.3	ZFX11ZB-TSV57AS13N

Hexalobular Retaining Screw



Part No.	
ZFX09-ZB-TSV-HLRS	30 Ncm

¹ Various groove heights at 4.5, 5.7 mm

² Not compatible with TSX Restorative Platform

Tools for New GenTek TiBases

One driver for compatible ZimVie Dental Connections

Hexalobular Screwdriver for Hexalobular Retaining Screw

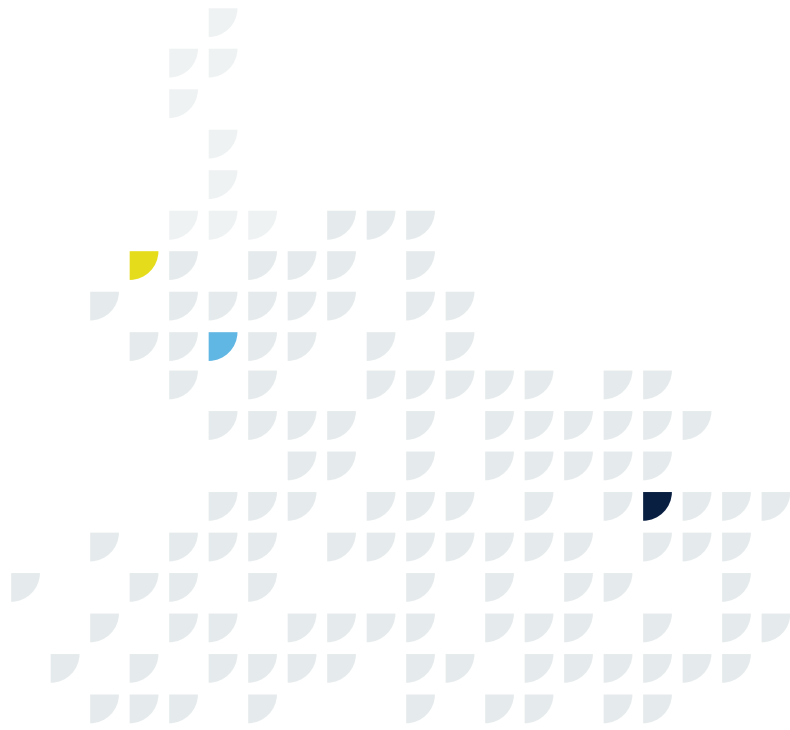


Length (mm)	Part No.
21	ZFX02HLD21
28	ZFX02HLD28
36	ZFX02HLD36

Low Torque Indicating Ratchet Wrench



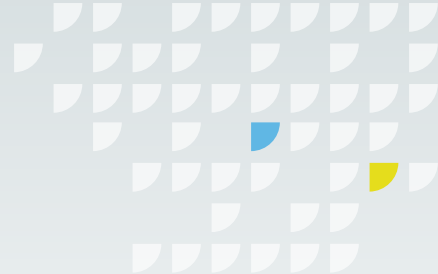
Description	Part No.
Low Torque Indicating Ratchet Wrench	L-TIRW
L-TIRW Standard ISO 1797 Adapter	C9980



Low Torque Indicating Ratchet Wrench Kit¹*incl. Adapter, Tray, and Driver Tips*

Description	Part No.
<ul style="list-style-type: none"> • L-TIRW: Low Torque Indicating Ratchet Wrench • C9980: L-TIRW Standard ISO 1797 Adapter²³ • RTI2035TR: Torque Indicating Ratchet Wrench Tray • RASH3N: Narrow Right Angle Large Hexed Driver Tip, 24mm • RASQ3N: Narrow Right Angle Square Driver Tip, 24mm 	L-TIRWK

¹Components also sold separately²Short ISO 1797 adapter also available (C9981)³C9980 can be ordered separately



GenTek Pre-Abutment Blanks

ZimVie Dental Eztetic and TSX Restorative Platform Connections

Titanium Pre-milled Abutment Blank *incl. Retaining Screw*



Restorative Platform (mm)	Part No.	Part No.	
2.9	ZFX18-ZB-EZ-29	ZFX09-ZB-EZ-RS	30Ncm

Retaining Screw

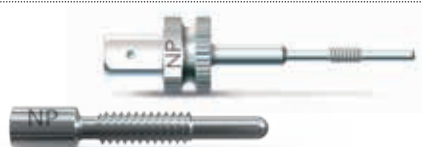


Hex Driver, Latch-Lock Hex Driver *for Retaining Screws & Intraoral Scanbodies*



Description	Part No.
Hex Driver, Short, with GemLock® Retention 1.25 mmD, 22 mmL	HXGR1.25 ^{1 2 3}
Hex Driver, Long, with GemLock Retention 1.25 mmD, 30 mmL	HXLGR1.25 ^{1 2 3}
Latch-Lock Hex Driver for Surgical and Prosthetic Screws, Short 1.25 mmD, 23 mmL <i>(may require reduction hand piece)</i>	HX1.25D ¹
Latch-Lock Hex Driver for Surgical and Prosthetic Screws, Long 1.25 mmD, 26 mmL <i>(may require reduction hand piece)</i>	HXL1.25D ¹

Removal Tool



Description	Part No.
Removal Tool for Abutments	CLRT2
Removal Tool for Narrow Platform for Abutments	ZFX02-RTNP

Torque Wrench Tool

for Abutment Screws & Intraoral Scanbodies



Description	Part No.
Torque Wrench, Restorative (adjustable torque range 10 – 35 Ncm)	TWR
Torque Wrench Driver, Short	TW1.25 ¹
Torque Wrench Driver, Long	TW1.25L ^{1 2}

ZimVie Dental TSX, Tapered Screw-Vent, & Trabecular Metal Restorative Platform Connections

Titanium Pre-milled Abutment Blank *incl. Retaining Screw*



Restorative Platform (mm)	Part No.
3.5	ZFX18-ZB-TSV-35
4.5	ZFX18-ZB-TSV-45
5.7 ⁵	ZFX18-ZB-TSV-57

Retaining Screw



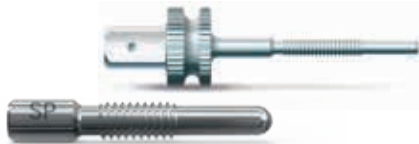
Part No.	
ZFX09-ZB-TSV-RS	30 Ncm

Hex Driver, Latch-Lock Hex Driver *for Retaining Screws & Intraoral Scanbodies*



Description	Part No.
Hex Driver, Short, with GemLock Retention 1.25 mmD, 22 mmL	HXGR1.25 ^{1 2 4}
Hex Driver, Long, with GemLock Retention 1.25 mmD, 30 mmL	HXLGR1.25 ^{1 2 4}
Latch-Lock Hex Driver for Surgical and Prosthetic Screws, Short 1.25 mmD, 23 mmL (<i>may require reduction hand piece</i>)	HX1.25D ¹
Latch-Lock Hex Driver for Surgical and Prosthetic Screws, Long 1.25 mmD, 26 mmL (<i>may require reduction hand piece</i>)	HXL1.25D ¹

Removal Tool



Description	Part No.
Removal Tool for Abutments	TLRT2
Removal Tool Standard Platform for Abutments	ZFX02-RTSP

Torque Wrench Tool

for Abutment Screws & Intraoral Scanbodies



Description	Part No.
Torque Wrench, Restorative (adjustable torque range 10 – 35 Ncm)	TWR
Torque Wrench Driver, Short	TW1.25 ¹
Torque Wrench Driver, Long	TW1.25L ^{1 2}

¹ Compatible with TiBases

² Compatible with IOS Scanbodies

³ Compatible with Removal Tool Narrow Platform

⁴ Compatible with Removal Tool Standard Platform

⁵ Not compatible with TSX Restorative Platform

GenTek TiBases Milling Block Compatible

ZimVie Dental Eztetic and TSX Restorative Platform Connections

Single-Unit Restorative Components

TiBase Engaging¹
incl. Retaining and Gluing Screws



Height (mm)	Restorative Platform (mm)	Part No.
4.7	2.9	ZFX11-ZB-EZ-2947-ES

Retaining Screw



Part No.	Recommended Torque
ZFX09-ZB-EZ-RS	30 Ncm

Multi-Unit Restorative Components

TiBase Non-Engaging¹
incl. Retaining and Gluing Screws



Height (mm)	Restorative Platform (mm)	Part No.
4.7	2.9	ZFX11-ZB-EZ-2947-NES

Retaining Screw



Part No.	Recommended Torque
ZFX09-ZB-EZ-RS	30 Ncm

Hex Driver, Latch-Lock Hex Driver
for Retaining Screws



Description	Part No.
Hex Driver, Short, with GemLock Retention 1.25 mmD, 22 mmL	HXGR1.25 ^{2 3 4}
Hex Driver, Long, with GemLock Retention 1.25 mmD, 30 mmL	HXLGR1.25 ^{2 3 4}
Latch-Lock Hex Driver for Surgical and Prosthetic Screws, Short 1.25 mmD, 23 mmL (may require reduction hand piece)	HX1.25D ²
Latch-Lock Hex Driver for Surgical and Prosthetic Screws, Long 1.25 mmD, 26 mmL (may require reduction hand piece)	HXL1.25D ²

Removal Tool



Description	Part No.
Removal Tool for Abutments	CLRT2
Removal Tool for Narrow Platform for Abutments	ZFX02-RTNP

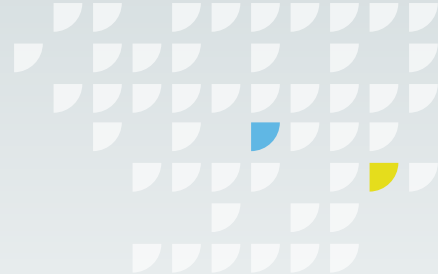
Torque Wrench Tool
for Abutment Screws



Description	Part No.
Torque Wrench, Restorative (adjustable torque range 10 – 35 Ncm)	TWR
Torque Wrench Driver, Short	TW1.25 ²
Torque Wrench Driver, Long	TW1.25L ^{2 3}

¹4 mm groove indicating minimal allowed post height
Not applicable for the GenTek Angulated Screw Channel TiBase
² Compatible with TiBases

³ Compatible with IOS Scanbodies
⁴ Compatible with Removal Tool Narrow Platform



GenTek TiBases Milling Block Compatible

ZimVie Dental TSX, Tapered Screw-Vent, & Trabecular Metal Restorative Platform Connections

Single-Unit Restorative Components

TiBase Engaging¹ incl. Retaining and Gluing Screws



Height (mm)	Restorative Platform (mm)	Part No.
4.7	3.5	ZFX11-ZB-TSV-3547-EL
	4.5	ZFX11-ZB-TSV-4547-EL
	5.7 ³	ZFX11-ZB-TSV-5747-EL

Retaining Screw



Part No.	
ZFX09-ZB-TSV-RS	30 Ncm

Multi-Unit Restorative Components

TiBase Non-Engaging¹ incl. Retaining and Gluing Screws



Height (mm)	Restorative Platform (mm)	Part No.
4.7	3.5	ZFX11-ZB-TSV-3547-NEL
	4.5	ZFX11-ZB-TSV-4547-NEL
	5.7 ³	ZFX11-ZB-TSV-5747-NEL

Retaining Screw



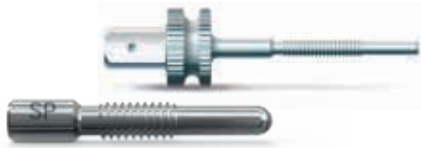
Part No.	
ZFX09-ZB-TSV-RS	30 Ncm

Hex Driver, Latch-Lock Hex Driver
for Retaining Screws



Description	Part No.
Hex Driver, Short, with GemLock Retention 1.25 mmD, 22 mmL	HXGR1.25 ^{2 3 4}
Hex Driver, Long, with GemLock Retention 1.25 mmD, 30 mmL	HXLGR1.25 ^{2 3 4}
Latch-Lock Hex Driver for Surgical and Prosthetic Screws, Short 1.25 mmD, 23 mmL (may require reduction hand piece)	HX1.25D ²
Latch-Lock Hex Driver for Surgical and Prosthetic Screws, Long 1.25 mmD, 26 mmL (may require reduction hand piece)	HXL1.25D ²

Removal Tool



Description	Part No.
Removal Tool for Abutments	TLRT2
Removal Tool Standard Platform for Abutments	ZFX02-RTSP

Torque Wrench Tool
for Abutment Screws



Description	Part No.
Torque Wrench, Restorative (adjustable torque range 10 – 35 Ncm)	TWR
Torque Wrench Driver, Short	TW1.25 ²
Torque Wrench Driver, Long	TW1.25L ^{2 3}

¹4 mm groove indicating minimal allowed post height
²Not applicable for the GenTek Angulated Screw Channel TiBase
³Compatible with TiBases
⁴Not compatible with TSX Restorative Platform

^{*}Compatible with IOS Scanbodies
[†]Compatible with Removal Tool Standard Platform

GenTek TiBases ZimVie Multi-Unit Abutment Compatible

ZimVie Dental Tapered Abutment

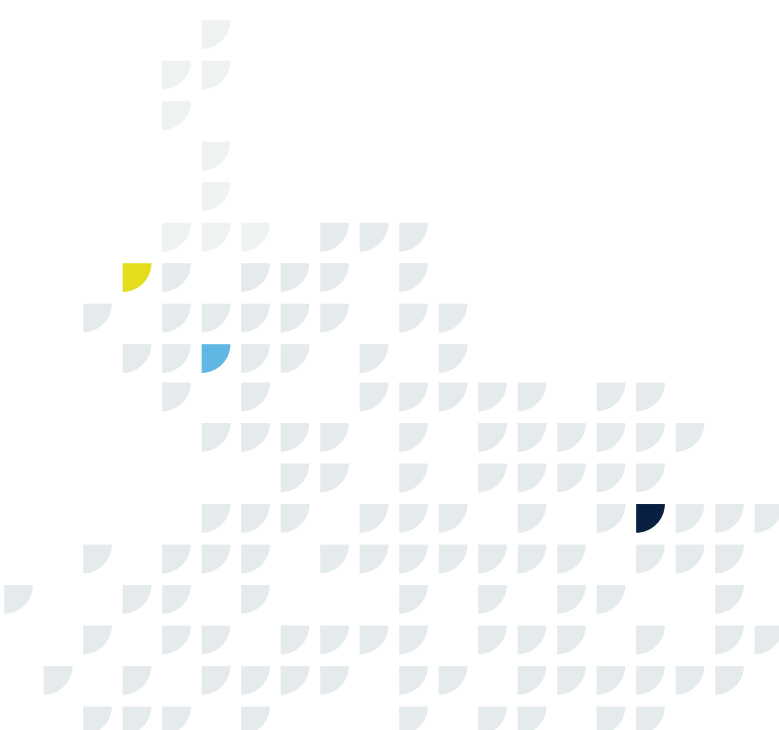
Multi-Unit Restorative Components

TiBase Non-Engaging¹
incl. Retaining and Gluing Screws

Retaining Screw



Height (mm)	Restorative Platform (mm)	Part No.	Part No.	Recommended Torque
3.9	4.5	ZFX11-ZB-TA-45	ZFX09-ZB-TA-RS	20 Ncm



Hex Driver, Latch-Lock Hex Driver
for Retaining Screws



Description	Part No.
Hex Driver, Short, with GemLock Retention 1.25 mmD, 22 mmL	HXGR1.25
Hex Driver, Long, with GemLock Retention 1.25 mmD, 30 mmL	HXLGR1.25
Latch-Lock Hex Driver for Surgical and Prosthetic Screws, Short 1.25 mmD, 23 mmL (may require reduction hand piece)	HX1.25D
Latch-Lock Hex Driver for Surgical and Prosthetic Screws, Long 1.25 mmD, 26 mmL (may require reduction hand piece)	HXL1.25D

Torque Wrench Tool
for Abutment Screws

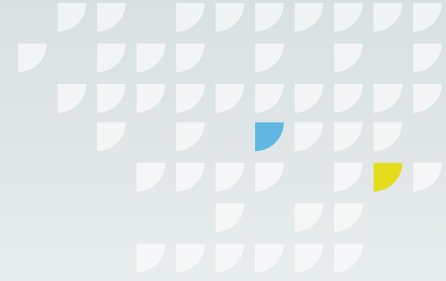


Description	Part No.
Torque Wrench, Restorative (adjustable torque range 10 – 35 Ncm)	TWR
Torque Wrench Driver, Short	TW1.25 ²
Torque Wrench Driver, Long	TW1.25L ^{2,3}

¹ Not applicable for the GenTek Angulated Screw Channel TiBase

² Compatible with TiBases

³ Compatible with IOS Scanbodies



ZimVie Dental Eztetic and TSX Restorative Platform Connections

Desktop Scanbody incl. Screw



↑
Recommended
Torque

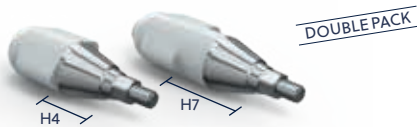
Restorative Platform (mm)	Part No.	
2.9	ZFX05D-ZB-EZ-29	Hand-tighten ¹

Torque Wrench for Desktop Scanbody



Part No.
ZFX02002067

Intraoral Scanbodies incl. Screws



↑
Recommended
Torque

Height (mm)	Restorative Platform (mm)	Part No.	
4.0 & 7.0	2.9	ZFX05I-ZB-EZ-29	Hand-tighten ¹

Hex Driver, Latch-Lock Hex Driver for Intraoral Scanbodies



Description	Part No.
Hex Driver, Short, with GemLock Retention 1.25 mmD, 22 mmL	HXGR1.25 ^{2 3 4}
Hex Driver, Long, with GemLock Retention 1.25 mmD, 30 mmL	HXLGR1.25 ^{2 3 4}
Latch-Lock Hex Driver for Surgical and Prosthetic Screws, Short 1.25 mmD, 23 mmL (may require reduction hand piece)	HX1.25D ²
Latch-Lock Hex Driver for Surgical and Prosthetic Screws, Long 1.25 mmD, 26 mmL (may require reduction hand piece)	HXL1.25D ²

ZimVie Dental TSX, Tapered Screw-Vent, & Trabecular Metal Restorative Platform Connections

Desktop Scanbody incl. Screw



↑
Recommended
Torque

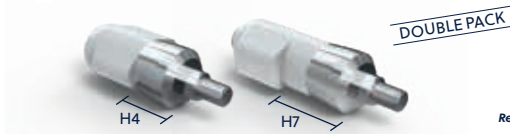
Restorative Platform (mm)	Part No.	Hand-tighten ¹
3.5	ZFX05D-ZB-TSV-35	
4.5	ZFX05D-ZB-TSV-45	
5.7 ⁶	ZFX05D-ZB-TSV-57	

Torque Wrench for Desktop Scanbody



Part No.
ZFX02002067

Intraoral Scanbodies incl. Screws



↑
Recommended
Torque

Height (mm)	Restorative Platform (mm)	Part No.	Hand-tighten ¹
4.0 & 7.0	3.5	ZFX05I-ZB-TSV-35	
	4.5	ZFX05I-ZB-TSV-45	
	5.7 ⁶	ZFX05I-ZB-TSV-57	

Hex Driver, Latch-Lock Hex Driver for Intraoral Scanbodies



Description	Part No.
Hex Driver, Short, with GemLock Retention 1.25 mmD, 22 mmL	HXGR1.25 ^{2 3 5}
Hex Driver, Long, with GemLock Retention 1.25 mmD, 30 mmL	HXLGR1.25 ^{2 3 5}
Latch-Lock Hex Driver for Surgical and Prosthetic Screws, Short 1.25 mmD, 23 mmL (may require reduction hand piece)	HX1.25D ²
Latch-Lock Hex Driver for Surgical and Prosthetic Screws, Long 1.25 mmD, 26 mmL (may require reduction hand piece)	HXL1.25D ²

¹ Minimum of 5 Ncm; Maximum of 15 Ncm. Refer to Instruction Manual for more information.

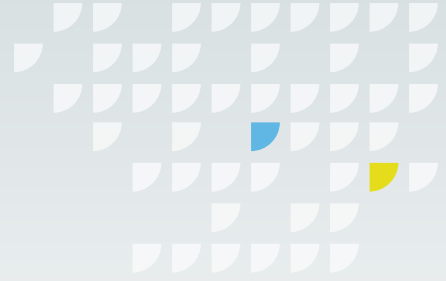
² Compatible with TiBases

³ Compatible with IOS Scanbodies

⁴ Compatible with Removal Tool Narrow Platform

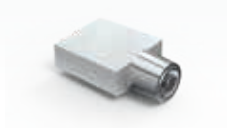
⁵ Compatible with Removal Tool Standard Platform

⁶ Not compatible with TSX Restorative Platform



ZimVie Dental Tapered Abutment

Desktop Scanbody *incl. Screw*



↑
Recommended
Torque

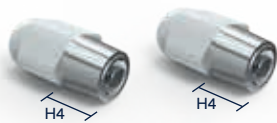
Restorative Platform (mm)	Part No.	
4.5	ZFX05D-ZB-TA-45	Hand-tighten ¹

Torque Wrench *for Desktop Scanbody*



Part No.
ZFX02002067

Intraoral Scanbodies *incl. Screws*



DOUBLE PACK

↑
Recommended
Torque

Height (mm)	Restorative Platform (mm)	Part No.	
4.0	4.5	ZFX05I-ZB-TA-45	Hand-tighten ¹

Hex Driver, Latch-Lock Hex Driver *for Intraoral Scanbodies*



Description	Part No.
Hex Driver, Short, with GemLock Retention 1.25 mmD, 22 mmL	HXGR1.25
Hex Driver, Long, with GemLock Retention 1.25 mmD, 30 mmL	HXLGR1.25
Latch-Lock Hex Driver for Surgical and Prosthetic Screws, Short, 1.25 mmD, 23 mmL <i>(may require reduction hand piece)</i>	HX1.25D
Latch-Lock Hex Driver for Surgical and Prosthetic Screws, Long, 1.25 mmD, 26 mmL <i>(may require reduction hand piece)</i>	HXL1.25D

¹Minimum of 5 Ncm; Maximum of 15 Ncm.
Refer to Instruction Manual for more information.

GenTek Digital Scan Analogs

ZimVie Dental TSX, Tapered Screw-Vent, & Trabecular Metal Restorative Platform Connections

Digital Scan Analog¹



Placement Tool for Digital Scan Analogs



Restorative Platform (mm)	Part No.
3.5	ZFX15-ZB-TSV-35
4.5	ZFX15-ZB-TSV-45
5.7	ZFX15-ZB-TSV-57 ²

Part No.
ZFX02-M18

ZimVie Dental Eztetic and TSX Restorative Platform Connections

Digital Scan Analog¹



Placement Tool for Digital Scan Analogs



Restorative Platform (mm)	Part No.
2.9	ZFX15-ZB-EZ-29

Part No.
ZFX02-M16

ZimVie Dental Tapered Abutment

Digital Scan Analog¹



Placement Tool for Digital Scan Analogs



Restorative Platform (mm)	Part No.
4.5	ZFX15-ZB-TA-45

Part No.
ZFX02-M18

¹Compatible with existing Certain / External Hex / Eztetic / TSV/TM / Low Profile / Tapered Abutment Impression Copings

²Not compatible with TSX Restorative Platform



www.implacom.nl | +31 (0)577 46 1927

To order genuine ZimVie Dental Components
call your local representative or send an email to
dentalCS@ZimVie.com

ZimVie Dental Global Headquarters

4555 Riverside Drive
Palm Beach Gardens, FL 33410
Phone: +1-561-776-6700
Fax: +1-561-776-1272
www.ZimVie.com/dental



Unless otherwise indicated, as referenced herein, all trademarks and intellectual property rights are the property of ZimVie Inc. or an affiliate; and all products are manufactured by one or more of the dental subsidiaries of ZimVie Inc. (Biomet 3i, LLC, Zimmer Dental, Inc., etc.) and marketed and distributed by ZimVie Dental and its authorized marketing partners. For additional product information, please refer to the individual product labeling or instructions for use. Product clearance and availability may be limited to certain countries/regions. This material is intended for clinicians only and does not comprise medical advice or recommendations. Distribution to any other recipient is prohibited. This material may not be copied or reprinted without the express written consent of ZimVie. TiBases (Class IIb), Scanbodies (Class I), Blanks (Class IIb), Tools (Class I), Screws (Class IIb) and Analogs (non medical devices). ZV2015 REV B 05/23 ©2023 ZimVie. All rights reserved.

