

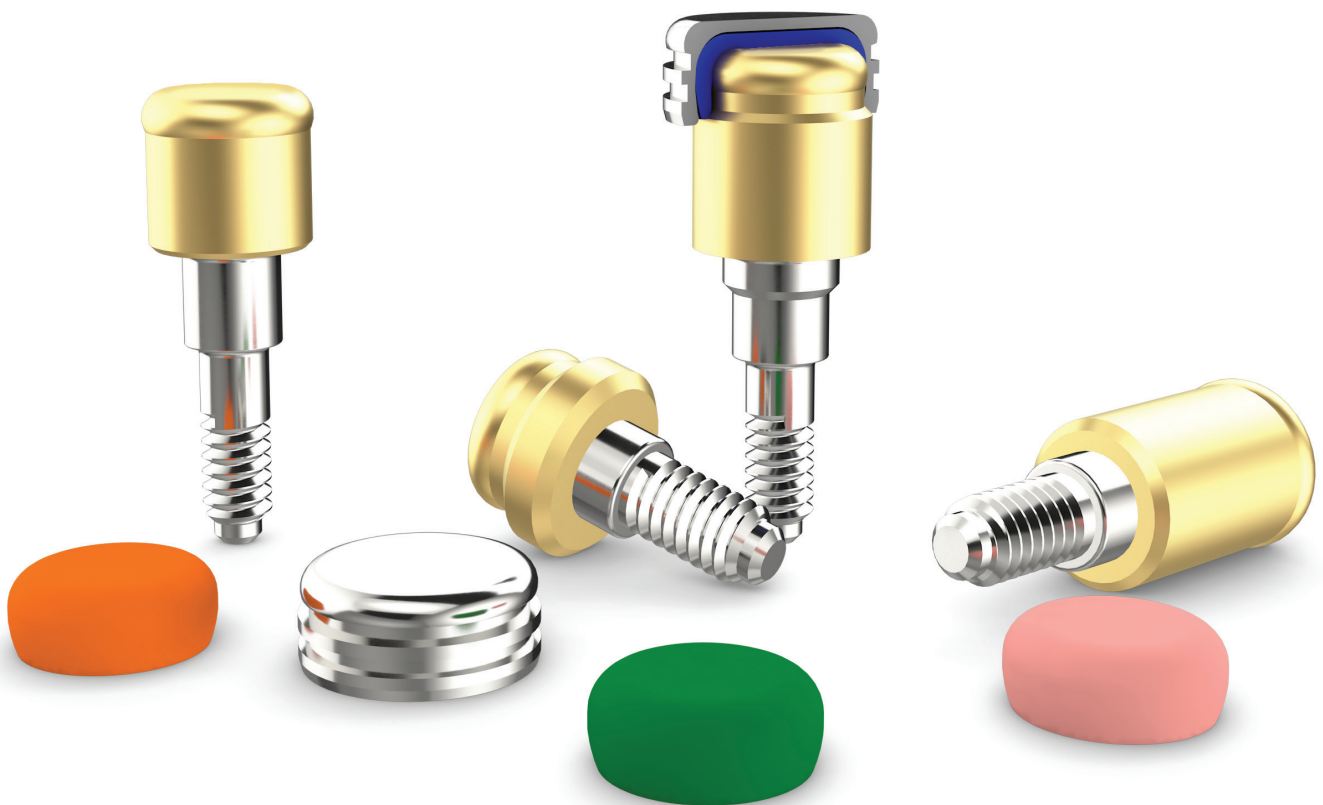


Good Just Got
Better


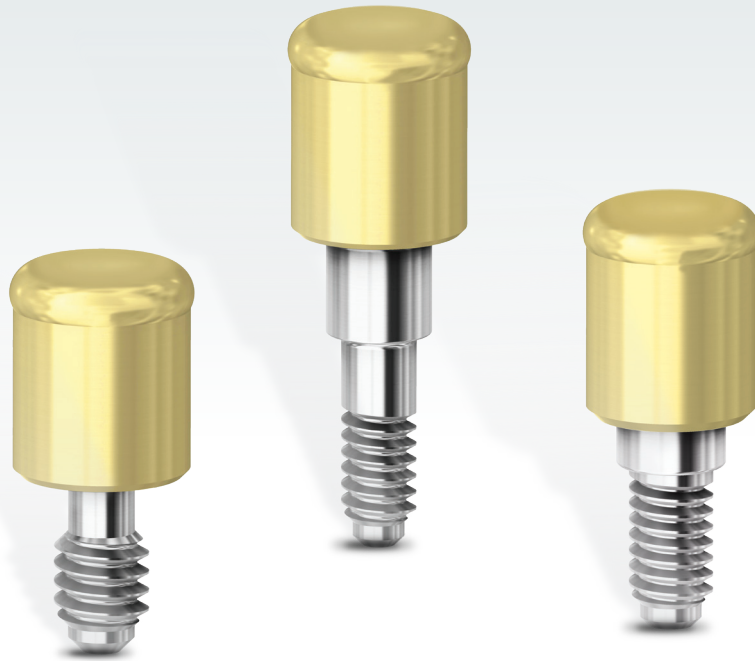


OverdenSURE[®]

Removable Attachment
System



 **ZimVie**



Good just got better with ZimVie's new removable attachment system, OverdenSURE!

Edentulism and failing dentition continue to be major health challenges affecting millions of people worldwide.

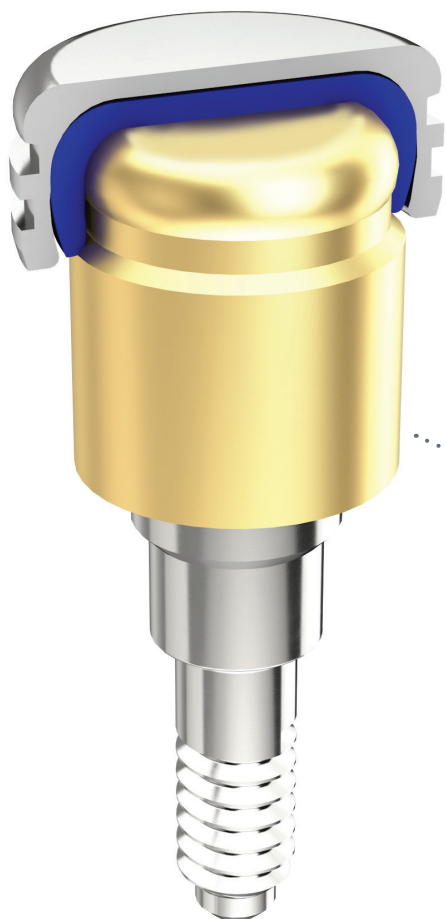
Our OverdenSURE product line features a Zirconium Nitride abutment coating for excellent aesthetics and function, and a wider range of abutment sizes for increased restorative flexibility, all wrapped in a classic system design that is intuitive to the user.

Zirconium Nitride is a fully bio-compatible material that exhibits increased hardness and wear resistance^{1,2}, reduced bacterial adhesion^{3,4,5,6,7}, and enhanced lubricity compared to the traditionally used Titanium Nitride.¹

It is estimated that 10% of the world's population is partially edentulous or edentulous⁸. In spite of advances in denture prosthodontics, soft-tissue supported dentures continue to be a source of:

- Chronic residual ridge resorption
- Decreased masticatory function
- Phonetic challenges
- Facial collapse
- A loose or poor fit

Together with our dental implant solutions, OverdenSURE Abutments are an ideal option for overdenture restorations, providing increased prosthetic stability and retention for patients wearing conventional dentures.



OVERDENSURE RETENTION SYSTEM

- Classic Housing Cap and Retention Insert design.
- Addresses problems such as limited interocclusal space through the OverdenSURE Abutment's low restorative height.
- Total vertical height of 3.17 mm (abutment crown, Retention Insert, and Housing Cap).

ZIRCONIUM NITRIDE ABUTMENT COATING

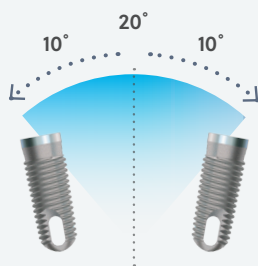
- Fully bio-compatible material.
- Exhibits increased hardness and wear resistance^{1,2}.
- Reduced bacterial adhesion^{3,4,5,6,7}.
- Enhanced lubricity compared to the traditionally used Titanium Nitride¹.
- Softer, more aesthetic gold color.



OverdenSURE Retention and Pivoting Technology

The OverdenSURE Retention Inserts have been designed to swivel inside the fixed Housing Cap enabling the easy seating of the removable prosthesis even when:

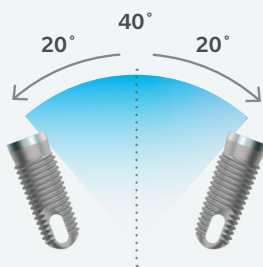
- Implants are placed off axis.
- The denture is not fully aligned with the abutments.



- Extra Light (1.5lbs / 680g)
- Light (3.0lbs / 1360g)
- Medium (5.0lbs / 2270g)

OverdenSURE Standard Retention Inserts

The Standard Retention Inserts provide angle correction for implants with up to 10° of implant divergence off axis, and a total of 20° of divergence between two implants.



- Extra Light (1.0lbs / 450g)
- Light (2.0lbs / 910g)
- Medium (4.0 lbs / 1810g)

OverdenSURE Extended Retention Inserts

The Extended Retention Inserts accommodate for up to 20° of implant divergence off axis, and a total of 40° of divergence between two implants.

All OverdenSURE Abutments come pre-mounted with a placement tool for ease of use!



Ordering Info

OverdenSURE Abutments



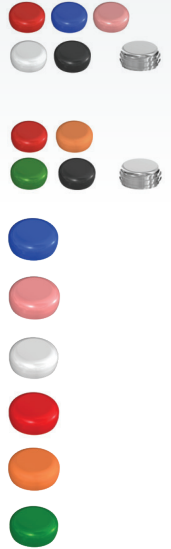
Tapered Screw-Vent®			
Collar Height	Seating Surface		
	3.5 mm	4.5 mm	5.7 mm
1.0 mm	ODS-TSV301	ODS-TSV401	ODS-TSV501
2.0 mm	ODS-TSV302	ODS-TSV402	ODS-TSV502
3.0 mm	ODS-TSV303	ODS-TSV403	ODS-TSV503
4.0 mm	ODS-TSV304	ODS-TSV404	ODS-TSV504
5.0 mm	ODS-TSV305	ODS-TSV405	ODS-TSV505
6.0 mm	ODS-TSV306	ODS-TSV406	ODS-TSV506

All abutments come packaged with:

- Standard Range Blue, Pink, and Clear Retention Inserts
- Extended Range Red Retention Insert
- Housing Cap and Black Insert
- White Processing Spacer

OverdenSURE Attachments

Description	Item No.
Retention Kit 20° Qty 1 Set	ODS-RIKIT2001
Retention Kit 20° Qty 2 Sets	ODS-RIKIT2002
Retention Kit 40° Qty 1 Set	ODS-RIKIT4001
Retention Kit 40° Qty 2 Sets	ODS-RIKIT4002
Blue Retention Insert 20° Qty 4	ODS-RIB2004
Pink Retention Insert 20° Qty 4	ODS-RIP2004
Clear Retention Insert 20° Qty 4	ODS-RIC2004
Red Retention Insert 40° Qty 4	ODS-RIR4004
Yellow Retention Insert 40° Qty 4	ODS-RIY4004
Green Retention Insert 40° Qty 4	ODS-RIG4004



OverdenSURE Tools and Accessories

Description	Item No.
Retention Housing Cap Qty 1	ODS-RH01
Retention Housing Cap Qty 4	ODS-RH04
Retention Housing Cap Qty 10	ODS-RH010
Blockout Spacer Qty 20	ODS-BS020
Abutment Driver	ODS-DRVR
Removal and Insertion Tool	ODS-IRTOOL
Impression Coping Qty 1	ODS-IC01
Impression Coping Qty 4	ODS-IC04
Impression Coping Qty 10	ODS-IC010
Abutment Bar Attachment Qty 1	ODS-BARATT01
Abutment Bar Attachment Qty 2	ODS-BARATT02
Abutment Bar Attachment Qty 4	ODS-BARATT04
Analog Qty 1	ODS-AA01
Analog Qty 4	ODS-AA04
Analog Qty 10	ODS-AA010



References

1. Oh DJ, Kim HJ, Chung CH. A study on mechanical properties of TiN, ZrN and WC coated film on the titanium alloy surface. The Journal of Korean Academy of Prosthodontics. 2006;44(6):740-50.
2. Ul-Hamid A. Synthesis, microstructural characterization and nanoindentation of Zr, Zr-nitride and Zr-carbonitride coatings deposited using magnetron sputtering. J Adv Res. 2020 Nov 25;29:107-119.
3. Grössner-Schreiber B, Griepentrog M, Hausteil I, Müller WD, Lange KP, Briedigkeit H, Göbel UB. Plaque formation on surface modified dental implants. An in vitro study. Clin Oral Implants Res. 2001 Dec;12(6):543-51.
4. Groessner-Schreiber B, Hannig M, Dück A, Griepentrog M, Wenderoth DF. Do different implant surfaces exposed in the oral cavity of humans show different biofilm compositions and activities?. European journal of oral sciences. 2004 Dec;112(6):516-22.
5. Grössner-Schreiber B, Teichmann J, Hannig M, Dörfer C, Wenderoth DF, Ott SJ. Modified implant surfaces show different biofilm compositions under in vivo conditions. Clin Oral Implants Res. 2009 Aug;20(8):817-26.
6. Brunello G, Brun P, Gardin C, Ferroni L, Bressan E, Meneghello R, Zavan B, Sivoilella S. Biocompatibility and antibacterial properties of zirconium nitride coating on titanium abutments: An in vitro study. PLoS One. 2018 Jun 26;13(6):e0199591.
7. Zhurakivska K, Ciacci N, Troiano G, Caponio VC, Scrascia R, Pallecchi L, Lo Muzio L, Arena F. Nitride-Coated and Anodic-Oxidized Titanium Promote a Higher Fibroblast and Reduced Streptococcus gordonii Proliferation Compared to the Uncoated Titanium. Prosthesis. 2020 Dec;2(4):333-9.
8. G.E. Carlsson and R. Omar. The future of complete dentures in oral rehabilitation. A critical review. J. Oral Rehabilitation. 2010 37; 143-156.



www.implacom.nl | +31 (0)577 46 1927

For more information visit ZimVie.com

ZimVie

4555 Riverside Drive
Palm Beach Gardens, FL 33410
1-800-342-5454
Phone: +1-561-776-6700
Fax: +1-561-776-1272



Unless otherwise indicated, as referenced herein, all trademarks and intellectual property rights are the property of ZimVie Inc. or an affiliate; and all products are manufactured by one or more of the dental subsidiaries of ZimVie Inc. (Biomet 3i, LLC, Zimmer Dental, Inc., etc.) and marketed and distributed by ZimVie Dental and its authorized marketing partners. OverdenSURE is manufactured by Terrats Medical S.L. For additional product information, please refer to the individual product labeling or instructions for use. Product clearance and availability may be limited to certain countries/regions. This material is intended for clinicians only and does not comprise medical advice or recommendations. Distribution to any other recipient is prohibited. This material may not be copied or reprinted without the express written consent of ZimVie. ZV1473 REV A 07/23 ©2023 ZimVie Inc. All rights reserved.

