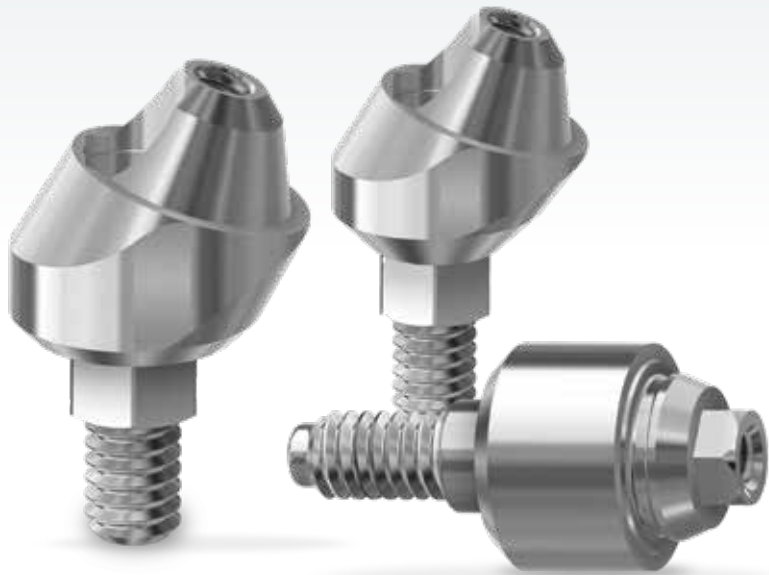




A complete solution for  
screw-retained restorations

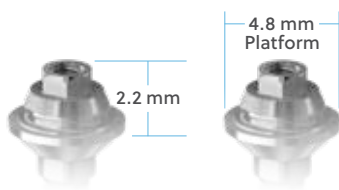


## Universal Multi-Unit Abutments

for 3.5 mm and 4.5 mm  
TSV®, TSX® Implant  
connections

### One 4.8 mm Restorative Platform

Includes a new digital workflow for greater flexibility  
in your definitive restoration



Low 2.2 mm restorative height  
for limited interarch spaces



Universal Ti-Bases are available  
in multiple heights for more  
versatility and for angulated  
screw channel access



Universal Implant Analogs can be used  
in both stone or 3D models

 **ZimVie**

ZimVie SURGICAL SOLUTIONS

### Universal Straight Abutment

Non-engaging, does not engage in the internal hex connection.  
Not for use in single unit restorations.

TSV and TSX Implant Systems		
Collar Height	Ø3.5 mm	Ø4.5 mm
1.0 mm	UMUA-TSV351	UMUA-TSV451
2.0 mm	UMUA-TSV352	UMUA-TSV452
3.0 mm	UMUA-TSV353	UMUA-TSV453
4.0 mm	UMUA-TSV354	UMUA-TSV454
5.0 mm	UMUA-TSV355	UMUA-TSV455



### Universal Angled Abutment, 17°

Engaging in implant, not for use in single-unit restorations  
(incl. preassembled retaining screw)

TSV and TSX Implant Systems		
Collar Height	Ø3.5 mm	Ø4.5 mm
2.5 mm	UMUA-TSV3525-17	UMUA-TSV4525-17
3.5 mm	UMUA-TSV3535-17	UMUA-TSV4535-17



### Universal Angled Abutment, 30°

Engaging in implant, not for use in single-unit restorations  
(incl. preassembled retaining screw)

TSV and TSX Implant Systems		
Collar Height	Ø3.5 mm	Ø4.5 mm
3.5 mm	UMUA-TSV3535-30	UMUA-TSV4535-30
4.5 mm	UMUA-TSV3545-30	UMUA-TSV4545-30



Universal Components	
Implant Analog	UMUA-A
Digital Implant Analog (0.050" screw hex)	UMUA-DA
Healing Cap (0.050" screw hex)	UMUA-HC
Temporary Cylinder	UMUA-TC
Intraoral Scan Body	UMUA-SBIO
Ti-Base Scan Body, Qty 5	UMUA-SBTB5
Desktop Scan Body (0.050" screw hex)	UMUA-SBDT
Impression Coping	UMUA-OTIC
Impression Coping, 5 mm(H), Qty 1	UMUA-CTICS
Impression Coping, 5 mm(H), Qty 4	UMUA-CTICS4
Impression Coping, 8 mm(H), Qty 1	UMUA-CTICL
Impression Coping, 8 mm(H), Qty 4	UMUA-CTICL4
Multi-Unit Ti-Base, 6 mm(H) (0.050" screw hex)	UMUA-TTS
Multi-Unit Ti-Base, 8 mm(H) (0.050" screw hex)	UMUA-TTL
Angulated Screw Channel Ti-Base	UMUA-ASCT
Angulated Screw Channel Ti-Base Screw	UMUA-ASCTS
Multi-Unit Screw (0.050" screw hex)	UMUA-S
OverdenSURE® Attachment	UMUA-ODS

Universal Tools	
Multi-Unit Driver	UMUA-D
Angulated Screw Channel Screwdriver, 24 mm(L)	ASC-SD24
Angulated Screw Channel Screwdriver, 30 mm(L)	ASC-SD30
ISO Latch, 4x4 Driver	ISO4X4A

For more information, visit [ZimVie.eu](http://ZimVie.eu)

ZimVie Global Headquarters  
4555 Riverside Drive  
Palm Beach Gardens, FL 33410  
Phone: +1-561-776-6700  
Fax: +1-561-776-1272  
[dentalCS@ZimVie.com](mailto:dentalCS@ZimVie.com)



[www.implacom.nl](http://www.implacom.nl) | +31 (0)577 46 1927



Medical device classes: Abutments, Ti-Bases, and Screws (Class IIb), Tools, Analogs, and Scan Body (Class I).

Unless otherwise indicated, as referenced herein, all trademarks are the property of ZimVie; and all products are manufactured by one or more of the dental subsidiaries of ZimVie Inc. (Biomet 3i, LLC, Zimmer Dental Inc., etc.) and marketed and distributed by ZimVie and its authorized marketing partners. Universal Multi-unit abutments, components and tools are manufactured by Terrats Medical S.L. For additional product information, please refer to the individual product labeling or instructions for use. Product clearance and availability may be limited to certain countries/regions. This material is intended for clinicians use only and does not comprise medical advice or recommendations. Distribution to any other recipient is prohibited. This material may not be copied or reprinted without the express written consent of ZimVie. ZV0859 REV B 07/24 ©2024 ZimVie. All rights reserved.

