

Beauty now and beyond



## 3.1 mmD Eztetic™ Dental Implant

### Restorative Stability and Simplicity

- User-friendly restorative options are available to meet your prosthetic needs
- Conical Double Friction-Fit™ Connection designed to deliver precision and stability
- Contour Abutment's emergence profile designed to provide space for soft tissue and esthetic emergence of the restoration

### Immediate Aesthetics

- Implant geometry and surgical protocol designed for high primary stability<sup>1</sup>
- Immediate placement and immediate provisionalization indicated when clinically appropriate\*

\* Immediate loading is indicated when there is good primary stability and an appropriate occlusal load

### Designed For Long-lasting Results

- Implant's coronal design along with integrated platform switching and a precise implant-to-abutment connection are designed to aid in crestal bone maintenance<sup>2</sup>
- The implant design features have been combined for exceptional strength<sup>1</sup> compared to other commercially available narrow implants



### Explore The Restorative Offerings



Tissue Healing, Impression  
Transfer and Provisional  
Restorations



Cement-Retained  
Restorations



Overdentures



Custom and  
CAD/CAM Abutments\*

\*Not available in all markets

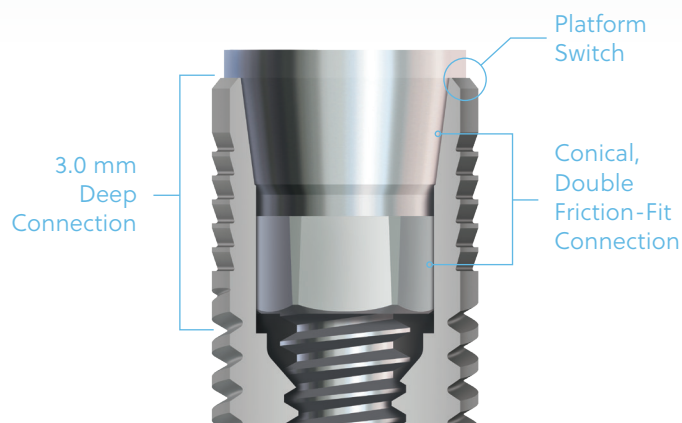
# Three Principles in One Connection

For the first time, a Conical Connection, Double Friction-Fit connection and Platform Switch have been combined to create a state-of-the-art abutment connection.

- Designed to reduce micromovement and microleakage via a precise implant-abutment interface, aiming to aid in crestal bone maintenance and abutment stability
- A long, 3.0 mm conical connection distributes forces deep into the implant, designed to reduce stresses on crestal bone

## Simply Seated

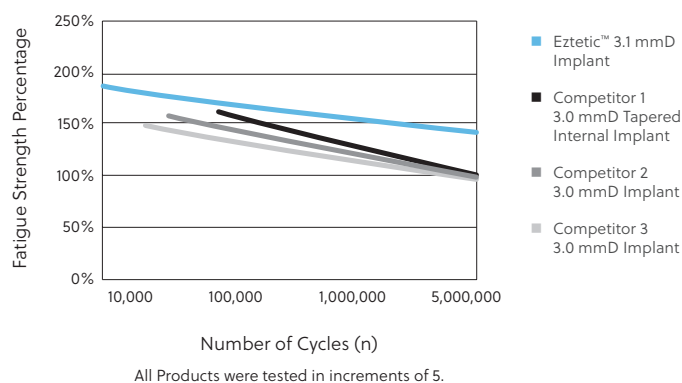
1. Align the abutment hex with implant hex and apply light vertical force.
2. Engagement of the abutment screw indicates accurate alignment.
3. Torque the abutment to 30 Ncm to ensure the abutment is fully seated.



## Implant Fatigue Strength<sup>1</sup>

The 3.1 mmD Eztetic Implants achieved 43% higher fatigue strength compared to selected competitive implants of similar diameters.<sup>1</sup>

1. Data on file.
2. Shin SY, Han DH. Influence of a microgrooved collar design on soft and hard tissue healing of immediate implantation in fresh extraction sites in dogs. Clin Oral Implants Res. 2010;21:804-814.



For more information, visit [ZimVie.com](http://ZimVie.com)

**ZimVie**  
4555 Riverside Drive  
Palm Beach Gardens, FL 33410  
1-800-342-5454  
Phone: +1-561-776-6700  
Fax: +1-561-776-1272

**IMPLACOM**  
IMPLANTEREN ZONDER ZORGEN

[www.implacom.nl](http://www.implacom.nl) | +31 (0)577 46 1927

**ZimVie**  
Restoring Daily Life.®

Unless otherwise indicated, as referenced herein, all trademarks and intellectual property rights are the property of ZimVie Inc. or an affiliate; and all products are manufactured by one or more of the dental subsidiaries of ZimVie Inc. (Biomet 3i, LLC, Zimmer Dental, Inc., etc.) and marketed and distributed by ZimVie Dental and its authorized marketing partners. Eztetic Dental Implant is manufactured and distributed by ZimVie Dental, Inc. For additional product information, please refer to the individual product labeling or instructions for use. Product clearance and availability may be limited to certain countries/regions. This material is intended for clinicians only and does not comprise medical advice or recommendations. Distribution to any other recipient is prohibited. This material may not be copied or reprinted without the express written consent of ZimVie Inc. ZV1198 REV A 05/23 ©2023 ZimVie Inc. All rights reserved.

