

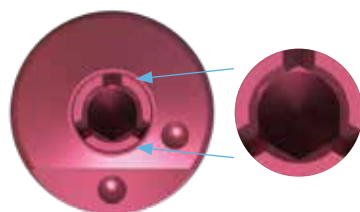
TSX™, TSV® and Eztetic® Encode® Emergency Impression System

Healing Abutments

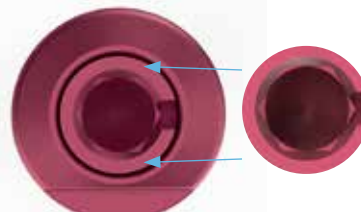
Surgical Placement

The Encode Emergency Healing Abutment is a 3-in-1 two-piece healing abutment/impression coping/scan-body designed to facilitate gingival tissue healing and consists of an abutment and retaining screw that are assembled together. Encode Emergency Healing Abutments have the Encode Coding scheme on the occlusal surface and a hex connection at the base of the healing abutment that engages the hex with the implant for orientation and anti-rotation.

Grooves on the occlusal surface of the screw identify the implant system.



Tapered Screw-Vent®
3 Grooves



Eztetic
1 Groove



- 1 Following implant placement, select an Encode Emergency Healing Abutment with the appropriate restorative platform diameter, emergence profile and collar height.



- 2 Use wide Encode Emergency Healing Abutment(s) to ensure the final abutment will seat easily without excessive blanching of the soft-tissue. Bone profiling may be required to fully seat the healing abutment, particularly in cases with sub-crestal implant placement deeper than 1mm.

Note: Please ensure that the instructions for use are made available to the restorative clinician and use the patient chart labels located in the package of the Encode Emergency Healing Abutment.



ZimVie

For instructions for use: ifu.biomet3i.com

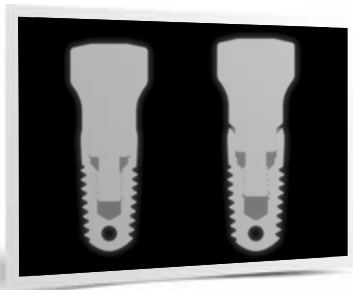


3 Use an Encode Emergence Healing Abutment that stands taller than the surrounded soft-tissue so all sides of the occlusal Healing Abutment are clear to facilitate proper traditional or digital impression and subsequent scanning.



4 Pick up the Encode Emergence Healing abutment(s) using a hexed driver (see list in table below) and place the healing abutment on the implant and hand-tighten.

Implant System	Driver Part Number
Tapered Screw-Vent & Eztetic	HXGR1.25 and HXLGR1.25



5 Following placement, confirm that the Encode Emergence Healing Abutment is fully seated on the implant with a radiograph.



6 Once fully seated, torque the healing abutment screw to 20Ncm using a restorative torque wrench and torque wrench hex driver (see list in table below). Where applicable, suture the soft-tissue around the Encode Emergence Healing Abutment.

Implant System	Torque Wrench	Driver Tip
Tapered Screw-Vent & Eztetic	TWR	TW1.25 or TW1.25L

ZimVie Dental Headquarters
 4555 Riverside Drive
 Palm Beach Gardens, FL 33410
 Phone: +1-561-776-6700
 Fax: +1-561-776-1272
 dentalCS@ZimVie.com



www.implacom.nl | +31 (0)577 46 1927

