



Implant Dentistry - Boost your surgical confidence!

15 – 16 January 2026
Winterthur, Switzerland



 **ZimVie**
Institute

Hands-On Workshop

Invitation to an interesting event

This is an amazing opportunity for implantologists to gain confidence. The personalized guidance provided by the instructors allows participants to explore both simple and complex cases, tailored to their individual needs.

We look forward to your participation!

Speaker



Dr. Martijn Kerver*

Martijn Kerver graduated in 2011 from ACTA. In 2014 he got to know Peter van de Schoor and he studied implantology by following many courses in the Netherlands and abroad. He is a registered implantologist since 2016 and he is full time active in oral implantology: He provides implantology in various practices of Dental Clinics and has taken over the implantology practice Garderen

from Peter van de Schoor in 2021. With great enthusiasm he provides education in the field of implantology.



Dr. Paul Promes*

Paul Promes graduated from the Academic Center for Dentistry Amsterdam in 2012 and gained experience in general practices afterwards. In 2014, he completed implantology training under Peter van de Schoor and has since pursued further education through national and international courses. He published scientific articles on oral surgery complications in 2014

and 2016. Paul now practices dental implantology and related surgery at three group practices in North Holland and offers training in digitally guided implant surgery with a focus on immediate replacement.



Program

ZimVie Institute

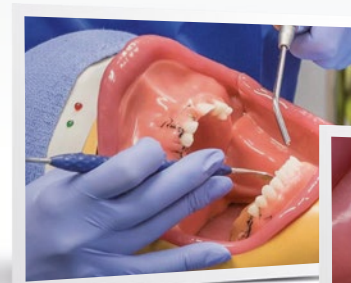
ZimVie Institute tries to transform the traditional classroom into a revolutionary learning facility. Each ZimVie Institute is equipped with the latest tools and advancements in implant dentistry as well as state-of-the-art audio and visual equipment. But what truly makes ZimVie Institute a world leader in dental education is our Simulated Patient Training Laboratory.

Course objectives

To expand your surgical implantology skills and opportunities according to the current guidelines / possibilities in your own practice. Place various implants in two hands-on days and learn to restore with state-of-the-art techniques using digital technology.

Topics

1. Clinical surgical protocol
2. Single and multiple implant placement
3. Immediate placement
4. Regeneration techniques
5. Planning with guided surgery



Registration

Register easily and conveniently online!

If you are interested in this course and would like to attend, please use the link below to secure your place.

Course date

Thursday, 15 January 2026

08.00 – 17.30

Friday, 16 January 2026

08.00 – 15.30

Participants

max. 24

Price²

850 Euro, VAT included

Venue

ZimVie Institute EMEA

Gruezefeldstrasse 41

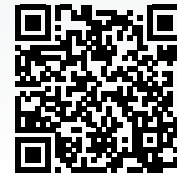
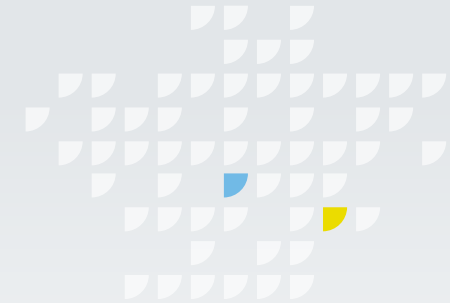
8404 Winterthur, Switzerland

Course Level

Basic/Intermediate

Course Language

Dutch



For registration scan the QR Code or visit

[https://education.zimvie.com/
events/course:2891305_3001415](https://education.zimvie.com/events/course:2891305_3001415)

² Price includes one dinner, lunches, break refreshments, all course materials and group transportation between the Park Hotel and the ZimVie Institute from 15 – 16 January 2026.

Registration and cancellation policy:

I. Registration: Registration to ZimVie* educational courses or events ("ZimVie courses") is limited to Health Care Professionals** ("Participant/s"). In order to provide each Participant with a focused and personalized educational experience, the number of Participants is limited for each ZimVie course. Registration is accepted on a first-come, first-served basis. Registration is not confirmed until Participant receives a confirmation from ZimVie.

II. Cancellation policy:

II.I ZimVie cancellation and amendment right: ZimVie reserves the right to amend topics, agenda, themes or panel discussions in ZimVie course program as well as given speaker, event location, day or time publicly communicated.

ZimVie reserves the right to cancel ZimVie courses at any time. If the cancellation takes place within 14 days (inclusive) prior to the starting date of ZimVie course, ZimVie will refund, in addition to registration fee, all duly accredited travel and accommodation expenses resulting from ZimVie course cancellation. If the ZimVie course is cancelled more than 14 days prior to the starting date, Participants are not eligible for the refund of any fees or expenses, excluding the registration fee.

II.II Participant cancellation right: If Participant wish to cancel, a written notification must be sent to Institute.DentalEMEA@ZimVie.com. No refunds for no-shows or cancellations made within 14 days of ZimVie course starting date will be provided to Participant.

EDUCATIONAL PURPOSE/NO MEDICAL ADVICE

I.-DISCLOSURE: ZimVie manufactures and distributes products discussed in ZimVie course. Within ZimVie product portfolio, there are products manufactured by different companies of the ZimVie group which may not be cross compatible. For additional product information, please refer to the individual product labeling or the individual instructions for use for each Product. Product clearance and availability may be limited to certain countries/regions. Product

information is intended for clinicians only and does not comprise medical advice or recommendations. Product information material may not be copied or reprinted without the express written consent of ZimVie.

II.-CONTENT DISCLAIMER: Participant must always be aware of the hazards of using limited knowledge in integrating new techniques or procedures into their practice. Only sound evidence-based dentistry should be used in patient therapy. The information provided in ZimVie courses is of a general nature and does not represent or constitute medical advice or recommendations and is for dental education purposes only. ZimVie does not practice medicine or dentistry. Each Participant should exercise his or her own independent judgment in the diagnosis and treatment of an individual patients. ZimVie courses and information provided thereon do not purport to replace the comprehensive training Participants have received. ZimVie courses are designed to present a fair and balanced view of all option

COMPLIANCE:

Participant acknowledges that ZimVie sponsorship of ZimVie course registration fee and materials, in accordance with ZimVie policies and to the extent permitted by applicable law, do not intend to improperly induce the purchase or use of any ZimVie product or to influence any procurement decision by Participant or the Institution to which Participant is professionally related. ZimVie intended bearing of ZimVie course registration fee and education material cost will be granted independent of any sales transactions between the Participant and ZimVie. Participant represents that nothing in this ZimVie course shall be construed as an obligation on Participant to refer any patient, physician or health organization to any ZimVie supplied products or services nor it will have any effect on Participant decisions regarding the use, ordering or purchase of dental products or services. Participants acknowledge that participation at ZimVie courses do not interfere with

any other obligations Participant has undertaken, in particular in connection with Participant current employment (if any) and that Participant Institution has no objections to Participant registration at ZimVie courses.

DATA PRIVACY: For information on how ZimVie may process Participant's Personal Data, the types of Personal Data ZimVie may collect, how ZimVie uses, shares and protects these Personal Data, data protection rights and how to contact ZimVie about its privacy practices, please see ZimVie's webpage and data privacy section provided on c-event registration page <https://www.ZimVie.com/en/privacy-notice.html>

TRANSPARENCY REPORTING:

Participants further acknowledge that certain laws, ethical rules or regulations now or in the future may require disclosure of information on compensation, gifts or other remuneration provided to health care professionals and that ZimVie and its group companies shall be entitled fully to comply with any such laws, rules or regulations when and as applicable.

All references to ZimVie Dental contained herein refer to the dental subsidiaries of ZimVie, Inc. This material is intended for clinicians only and does not comprise medical advice or recommendations. This material may not be copied or reprinted without the express written consent of ZimVie.

* By ZimVie we shall understand any of ZimVie group companies, all its subsidiaries, affiliates or members of ZimVie Group organizing a dental education course.

**Healthcare Professional (HCP): An individual, entity, or employee of such entity, within the continuum of care of a patient, which may purchase, lease, recommend, use, prescribe, or arrange for the purchase or lease of ZimVie products and services.



Contact us for more information on the following educational opportunities:



ZI LIVE
CLINICAL



ZI LIVE
WEBCASTS



ZI LIVE
CASE PRESENTATIONS



ON-DEMAND
WEBCASTS



TECHNOLOGY
FORUMS



ZIMVIE INSTITUTE
PROGRAMS



ZIPATHWAYZ[®]
PROGRAMS



ZI IMPLANT SKILLZ[®]
SERIES



REGIONAL
PROGRAMS

ZimVie Global Headquarters

4555 Riverside Drive
Palm Beach Gardens, FL 33410
Phone: +1-561-776-6700
Fax: +1-561-776-1272
www.ZimVie.com

ZimVie Institute EMEA

Grüzefeldstrasse 41
8404 Winterthur, Switzerland
Phone: +41 52 560 11 90
Institute.DentalEMEA@ZimVie.com



Unless otherwise indicated, as referenced herein, all trademarks and intellectual property rights are the property of ZimVie Inc. or an affiliate; and all products are manufactured by one or more of the dental subsidiaries of ZimVie Inc. (Biomet 3i, LLC, Zimmer Dental, Inc., etc.) and marketed and distributed by ZimVie and its authorized marketing partners. For additional product information, please refer to the individual product labeling or instructions for use. Product clearance and availability may be limited to certain countries/regions. This material is intended for clinicians only and does not comprise medical advice or recommendations. Distribution to any other recipient is prohibited. This material may not be copied or reprinted without the express written consent of ZimVie. EDU5434(EDU5041EM) REV B 02/25 ©2025 ZimVie. All rights reserved.