



Implant Dentistry - Boost je chirurgische expertise en zelfvertrouwen!

14 – 15 januari 2027
Winterthur, Zwitserland



 **ZimVie**
Institute

Hands-On Workshop

Ontdek interactieve implantologie bij het ZimVie Institute

Het ZimVie Institute verandert het traditionele klaslokaal in een modern praktijkgerichte leeromgeving. Elk instituut is uitgerust met de nieuwste hulpmiddelen, implantologie instrumentarium en, geavanceerde audiovisuele technologie. Wat het ZimVie Institute écht onderscheidt, is het Simulated Patiënt Training Laboratory, waar deelnemers praktische ervaring opdoen in een, realistische omgeving – en zo de kloof tussen theorie en klinische praktijk overbruggen.

Wij kijken uit naar je deelname!

Spreekers



Dr. Martijn Kerver*

Martijn Kerver studeerde in 2011 af aan ACTA. In 2014 maakte hij kennis met Peter van de Schoor en verdiepte hij zich in de implantologie door het volgen van talrijke cursussen in binnen- en buitenland. Sinds 2016 is hij geregistreerd implantoloog en is hij fulltime actief in de orale implantologie. Hij verricht implantologische behandelingen in diverse praktijken van Dental

Clinics en heeft in 2021 de implantologiepraktijk Garderen overgenomen van Peter van de Schoor. Met groot enthousiasme verzorgt hij onderwijs op het gebied van implantologie.



Dr. Paul Promes*

Paul Promes studeerde in 2012 af aan het ACTA en deed daarna ervaring op in algemene praktijken. In 2014 volgde hij de opleiding implantologie bij Peter van de Schoor en sindsdien heeft hij zich verder ontwikkeld door het volgen van nationale en internationale cursussen. In 2014 en 2016 publiceerde hij wetenschappelijke artikelen over complicaties bij orale chirurgie. Paul is momenteel

werkzaam in de dentale implantologie en aanverwante chirurgie in drie groepspraktijken in Noord-Holland en verzorgt trainingen in digitaal geleide implantaatchirurgie met een focus op directe vervanging.

Programma

Cursusdoelstellingen

Til je implantologie naar een hoger niveau. Deze intensieve tweedaagse hands-on cursus is ontworpen voor ambitieuze klinici die hun chirurgische vaardigheden willen uitbreiden en moderne implantaatworkflows willen integreren in de dagelijkse praktijk. Onder deskundige begeleiding plaats je meerdere implantaten in realistische klinische scenario's en verfijn je het chirurgisch protocol volgens de huidige evidence-based standaarden. De focus ligt op voorspelbare, efficiënte en minimaal invasieve behandelplannen die direct in je eigen praktijk kunnen worden toegepast. Naast chirurgie legt de cursus de nadruk op moderne restauratieve oplossingen met behulp van geavanceerde digitale technologie – van CBCT-gebaseerde planning tot guided surgery en prothetische restauratie. Dit is niet alleen theorie. Dit is een praktische, hands-on training die je zelfvertrouwen versterkt en je behandelspectrum vergroot.

Wat zal je bereiken

- Meer vertrouwen in chirurgische plaatsing van implantaten
- Uitgebreidere behandelmogelijkheden voor je patiënten
- Integratie van digitale workflows in je dagelijkse routine
- Verbeterde voorspelbaarheid en efficiëntie
- Hands-on ervaring in het ZimVie Laboratorium

Hoogtepunten van de cursus

- Klinische chirurgische protocollen – stap voor stap
- Plaatsing van enkelvoudige en meervoudige implantaten
- Concepten voor immediate implantaat plaatsing
- Technieken voor harde- en weke weefsel regeneratie
- Digitale behandelplanning
- Guided surgery workflows
- Innovatieve prothetiek op implantaten en restauratieve oplossingen
- Praktische tips voor het omgaan met complicaties



Registratie

Registreer eenvoudig en snel online!

Als je geïnteresseerd bent in deze cursus en wilt deelnemen, gebruik dan de onderstaande link om uw je aan te melden.

Cursusdata

Donderdag 14 januari
2027 08.00 – 17.30 uur
Vrijdag 15 januari 2027
08.00 – 15.30 uur

Deelnemers

max. 24

Prijs*

850 Euro, inclusief BTW

Locatie

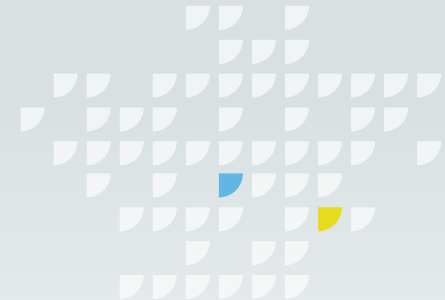
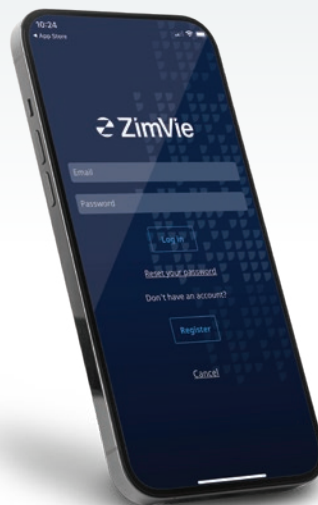
ZimVie Institute EMEA
Gruezefeldstrasse 41
8404 Winterthur, Switzerland

Cursusniveau

Basis / Gevorderd

Cursus taal

Nederlands



Scan de QR-code of bezoek de volgende link:
https://education.zimvie.com/events/course:4160673_4253625

*De prijs is inclusief één diner, lunches, tussendoortjes, alle cursusmaterialen en groepsvervoer tussen het Park Hotel en het ZimVie Institute op 14–15 januari 2027.

Registration and cancellation policy:

I. Registration: Registration to ZimVie* educational courses or events ("ZimVie courses") is limited to Health Care Professionals** ("Participant/s"). In order to provide each Participant with a focused and personalized educational experience, the number of Participants is limited for each ZimVie course. Registration is accepted on a first-come, first-served basis. Registration is not confirmed until Participant receives a confirmation from ZimVie.

II. Cancellation policy:

II.I ZimVie cancellation and amendment right: ZimVie reserves the right to amend topics, agenda, themes or panel discussions in ZimVie course program as well as given speaker, event location, day or time publicly communicated.

ZimVie reserves the right to cancel ZimVie courses at any time. If the cancellation takes place within 14 days (inclusive) prior to the starting date of ZimVie course, ZimVie will refund, in addition to registration fee, all duly accredited travel and accommodation expenses resulting from ZimVie course cancellation. If the ZimVie course is cancelled more than 14 days prior to the starting date, Participants are not eligible for the refund of any fees or expenses, excluding the registration fee.

II.II Participant cancellation right: If Participant wish to cancel, a written notification must be sent to Institute.DentalEMEA@ZimVie.com. No refunds for no-shows or cancellations made within 14 days of ZimVie course starting date will be provided to Participant.

EDUCATIONAL PURPOSE/NO MEDICAL ADVICE

I.-DISCLOSURE: ZimVie manufactures and distributes products discussed in ZimVie course. Within ZimVie product portfolio, there are products manufactured by different companies of the ZimVie group which may not be cross compatible. For additional product information, please refer to the individual product labeling or the individual instructions for use for each Product. Product clearance and availability may be limited to certain countries/regions. Product

information is intended for clinicians only and does not comprise medical advice or recommendations. Product information material may not be copied or reprinted without the express written consent of ZimVie.

II.-CONTENT DISCLAIMER: Participant must always be aware of the hazards of using limited knowledge in integrating new techniques or procedures into their practice. Only sound evidence-based dentistry should be used in patient therapy. The information provided in ZimVie courses is of a general nature and does not represent or constitute medical advice or recommendations and is for dental education purposes only. ZimVie does not practice medicine or dentistry. Each Participant should exercise his or her own independent judgment in the diagnosis and treatment of an individual patients. ZimVie courses and information provided thereon do not purport to replace the comprehensive training Participants have received. ZimVie courses are designed to present a fair and balanced view of all option

COMPLIANCE:

Participant acknowledges that ZimVie sponsorship of ZimVie course registration fee and materials, in accordance with ZimVie policies and to the extent permitted by applicable law, do not intend to improperly induce the purchase or use of any ZimVie product or to influence any procurement decision by Participant or the Institution to which Participant is professionally related. ZimVie intended bearing of ZimVie course registration fee and education material cost will be granted independent of any sales transactions between the Participant and ZimVie. Participant represents that nothing in this ZimVie course shall be construed as an obligation on Participant to refer any patient, physician or health organization to any ZimVie supplied products or services nor it will have any effect on Participant decisions regarding the use, ordering or purchase of dental products or services. Participants acknowledge that participation at ZimVie courses do not interfere with

any other obligations Participant has undertaken, in particular in connection with Participant current employment (if any) and that Participant Institution has no objections to Participant registration at ZimVie courses.

DATA PRIVACY: For information on how ZimVie may process Participant's Personal Data, the types of Personal Data ZimVie may collect, how ZimVie uses, shares and protects these Personal Data, data protection rights and how to contact ZimVie about its privacy practices, please see ZimVie's webpage and data privacy section provided on c-event registration page <https://www.ZimVie.com/en/privacy-notice.html>

TRANSPARENCY REPORTING:

Participants further acknowledge that certain laws, ethical rules or regulations now or in the future may require disclosure of information on compensation, gifts or other remuneration provided to health care professionals and that ZimVie and its group companies shall be entitled fully to comply with any such laws, rules or regulations when and as applicable.

All references to ZimVie Dental contained herein refer to the dental subsidiaries of ZimVie, Inc. This material is intended for clinicians only and does not comprise medical advice or recommendations. This material may not be copied or reprinted without the express written consent of ZimVie.

* By ZimVie we shall understand any of ZimVie group companies, all its subsidiaries, affiliates or members of ZimVie Group organizing a dental education course.

**Healthcare Professional (HCP): An individual, entity, or employee of such entity, within the continuum of care of a patient, which may purchase, lease, recommend, use, prescribe, or arrange for the purchase or lease of ZimVie products and services.

Neem contact met ons op voor meer informatie over de volgende opleidingsmogelijkheden:



ZI LIVE
CLINICAL



ZI LIVE
WEBCASTS



ZI LIVE
CASE PRESENTATIONS



ON-DEMAND
WEBCASTS



TECHNOLOGY
FORUMS



ZIMVIE INSTITUTE
PROGRAMS



ZIPATHWAYZ[®]
PROGRAMS



ZI IMPLANT SKILLZ[®]
SERIES



REGIONAL
PROGRAMS

ZimVie US Corp LLC

4555 Riverside Drive
Palm Beach Gardens, FL 33410
Tel: +1 561 776 6700
Fax: +1 561 776 1272
dentalCS@ZimVie.com
www.ZimVie.com

ZimVie Institute EMEA

Grüzefeldstrasse 41
8404 Winterthur, Switzerland
Tel: +41 52 560 11 90
Institute.DentalEMEA@ZimVie.com



Unless otherwise indicated, as referenced herein, all trademarks and intellectual property rights are the property of ZimVie Inc. and its affiliates; and all products are manufactured by one or more of the dental subsidiaries of ZimVie US Corp LLC (Biomet 3i, LLC, etc.) and distributed by ZimVie US Corp LLC and its authorized marketing partners. For other countries, please check the local laws and regulation. For additional product information, please refer to the individual product labeling or instructions for use. Product clearance and availability may be limited to certain countries/regions. This material is intended for clinicians only and does not comprise medical advice or recommendations. Distribution to any other recipient is prohibited. This material may not be copied or reprinted without the express written consent of ZimVie and is not for distribution in France. EDU6336EM REV A 02/26 ©2026 ZimVie. All rights reserved.